

**The Sois Fund - Aggressive**

SOIS, Inc

5441 Kietzke Ln

Reno

NV 89512 USA

Contact Travis Crawford

Marketing Contact Aaron Gutierrez

Benchmark 1 (BM1):

S&P 500 TR

Title Manager

Title Director of Operations

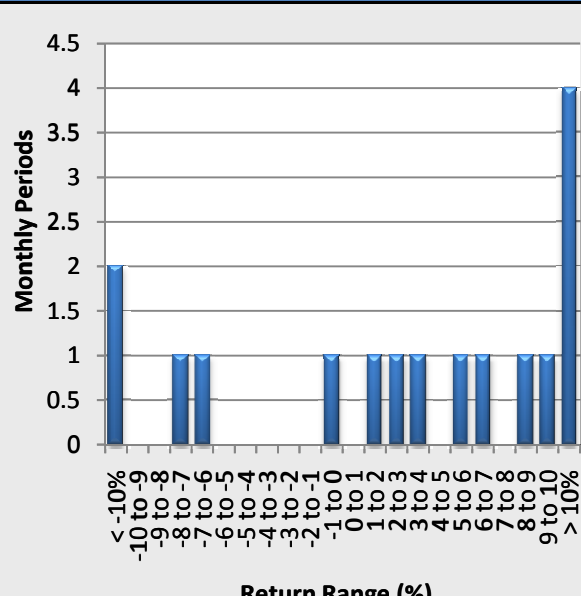
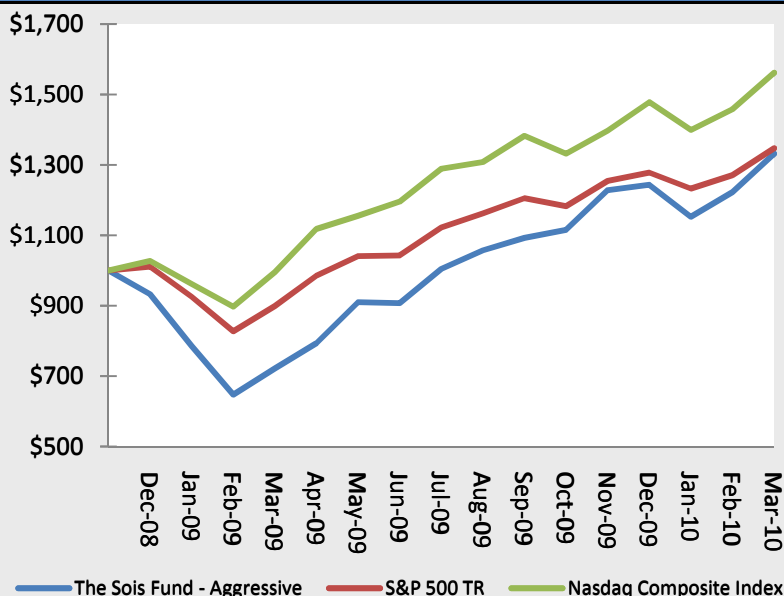
Benchmark 2 (BM2):

Nasdaq Composite Index

The Sois Aggressive Fund seeks to maximize capital by not wearing ties at work, not trying to confuse you with a bunch of fancy technical jargon, not wasting time with a bunch of stupid meetings, and suggesting investment strategies that don't seem stupid. The fund is positioned aggressively to capture as much of the economic recovery as possible.

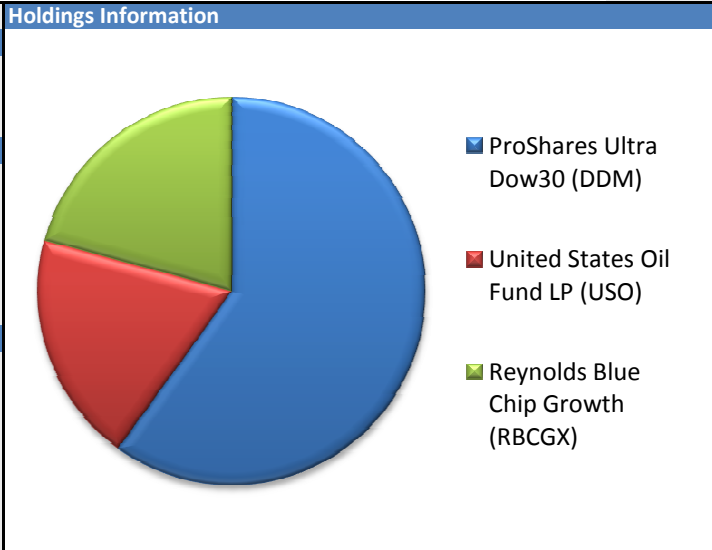
**Growth of Initial \$1000**

**Distribution of Returns**



Monthly Performance (%) Net of Fees													
Year	Jan	Feb	Mar	Apr	May	Jun	Jul	Aug	Sep	Oct	Nov	Dec	Year
2010	-7.35%	6.09%	8.89%										7.03%
2009	-15.78%	-17.57%	11.51%	9.92%	14.60%	-0.24%	10.65%	5.24%	3.38%	2.06%	10.14%	1.28%	33.33%
2008												-6.72%	-6.72%

Statistical Analysis			
	Fund	BM1	BM2
<b>Annual Returns</b>			
2010-(YTD)	7.03%	5.39%	5.68%
2009	33.33%	26.46%	43.89%
2008	-6.72%	1.06%	2.70%
<b>Returns</b>			
Compound ROR	23.93%	25.03%	39.69%
Cumulative Return	33.11%	34.69%	56.16%
Cumulative VAMI	\$ 1,331	\$ 1,347	\$ 1,562
Best Month	14.60%	9.57%	12.35%
Worst Month	-17.57%	-10.65%	-6.68%
% Positive Months	68.75%	75.00%	75.00%
<b>Risk</b>			
Standard Deviation	33.43%	20.10%	20.18%
Sharpe (ML 3-month T-Bills)	0.12	-0.38	-0.02
Sortino Ratio (10.0%)	0.51	0.96	2.19
Downside Deviation (10.0%)	23.50%	13.50%	11.13%
Max Drawdown	-35.24%	-18.18%	-12.63%
Months In Maximum Drawdown	3	2	2
Months To Recover	5	3	2



Comparison To Benchmark(s)		
Alpha	-0.92%	-1.71%
Annualized Alpha	-10.52%	-18.68%
Beta	1.56	1.33
Correlation	0.94	0.80
R-Squared	0.88	0.64

Top 5 Holdings	
ProShares Ultra Dow30 (DDM)	59.37%
United States Oil Fund LP (USO)	19.07%
Reynolds Blue Chip Growth (RBCGX)	20.59%

\*\*\*Past Performance is not indicative of future results. Good thing because that means we might still pull this one off.\*\*\*