

The Sois Fund - Aggressive

SOIS, Inc

5441 Kietzke Ln

Reno

NV

89512

USA

Contact Travis Crawford

Marketing Contact

Aaron Gutierrez

Benchmark 1 (BM1):

S&P 500 TR

Title Manager

Title

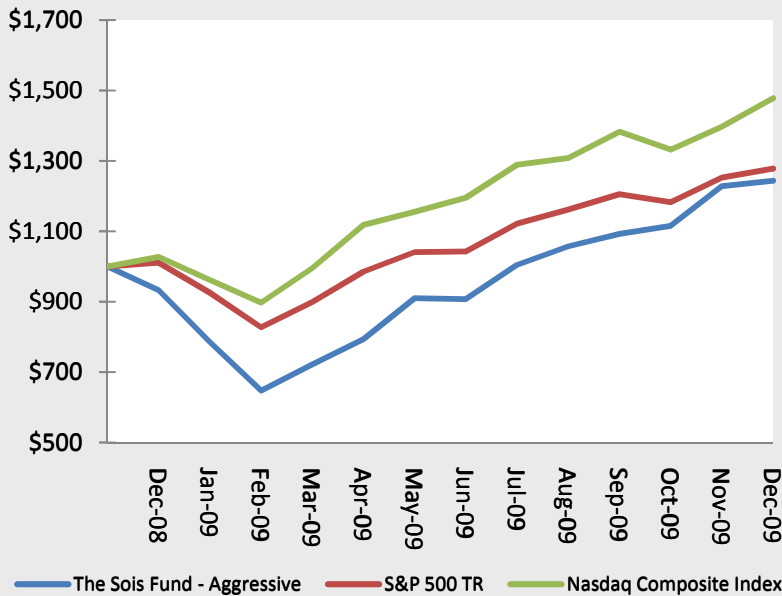
Director of Operations

Benchmark 2 (BM2):

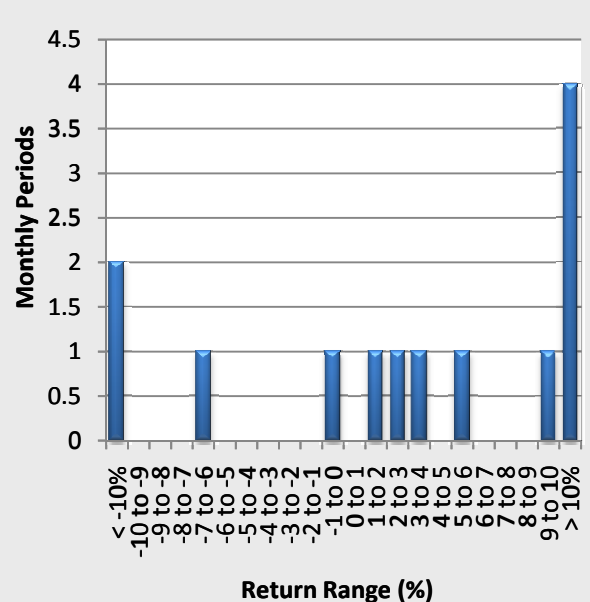
Nasdaq Composite Index

The T-Money Fund seeks to maximize capital by not wearing ties at work, not trying to confuse you with a bunch of fancy technical jargon, not wasting time with a bunch of stupid meetings, and suggesting investment strategies that don't seem stupid. The fund is positioned aggressively to capture as much of the economic recovery as possible.

Growth of Initial \$1000



Distribution of Returns



Monthly Performance (%) Net of Fees													
Year	Jan	Feb	Mar	Apr	May	Jun	Jul	Aug	Sep	Oct	Nov	Dec	Year
2009	-15.78%	-17.57%	11.51%	9.92%	14.60%	-0.24%	10.65%	5.24%	3.38%	2.06%	10.14%	1.28%	33.33%
2008												-6.72%	-6.72%

Statistical Analysis		Fund	BM1	BM2	Holdings Information	
Annual Returns						
2009-(YTD)		33.33%	26.43%	43.89%		
2008		-6.72%	1.06%	2.70%		
Returns						
Compound ROR		22.30%	25.39%	43.40%		
Cumulative Return		24.37%	27.78%	47.77%		
Cumulative VAMI		\$ 1,244	\$ 1,278	\$ 1,478		
Best Month		14.60%	9.57%	12.35%		
Worst Month		-17.57%	-10.65%	-6.68%		
% Positive Months		69.23%	76.92%	76.92%		
Risk						
Standard Deviation		35.29%	21.34%	20.48%		
Sharpe (ML 3-month T-Bills)		0.12	-0.38	-0.02		
Sortino Ratio (10.0%)		0.43	0.92	2.50		
Downside Deviation (10.0%)		24.86%	14.36%	10.83%		
Max Drawdown		-35.24%	-18.18%	-12.63%		
Months In Maximum Drawdown		3	2	2		
Months To Recover		5	3	2		
Comparison To Benchmark(s)					Top 5 Holdings	
Alpha			-1.02%	-2.12%	ProShares Ultra Dow30 (DDM) 75.84%	
Annualized Alpha			-11.55%	-22.71%	United States Oil Fund LP (USO) 24.16%	
Beta			1.54	1.34		
Correlation			0.93	0.78		
R-Squared			0.87	0.61		

Past Performance is not indicative of future results. Good thing because that means we might still pull this one off.