

The Sois Fund - Aggressive

SOIS, Inc

5441 Kietzke Ln

Reno

NV

89512

USA

Contact Travis Crawford

Marketing Contact

Aaron Gutierrez

Benchmark 1 (BM1):

S&P 500 TR

Title Manager

Title

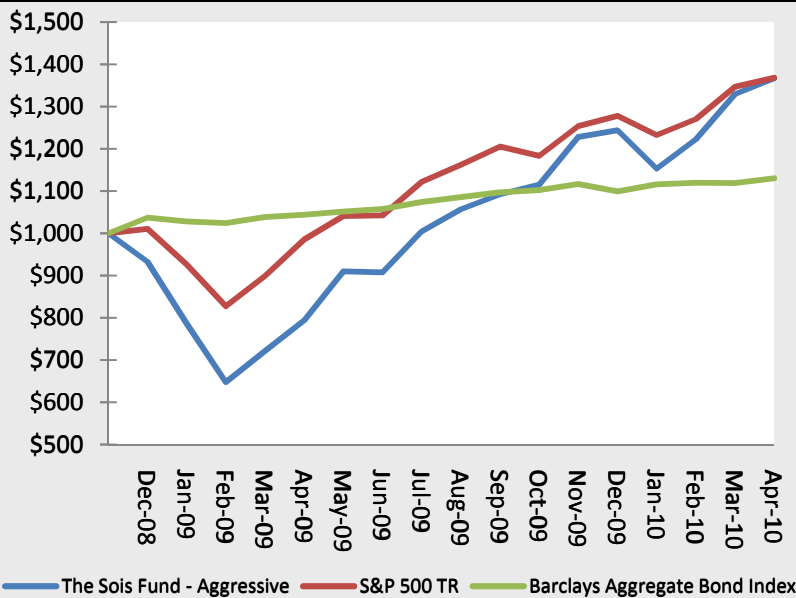
Director of Operations

Benchmark 2 (BM2):

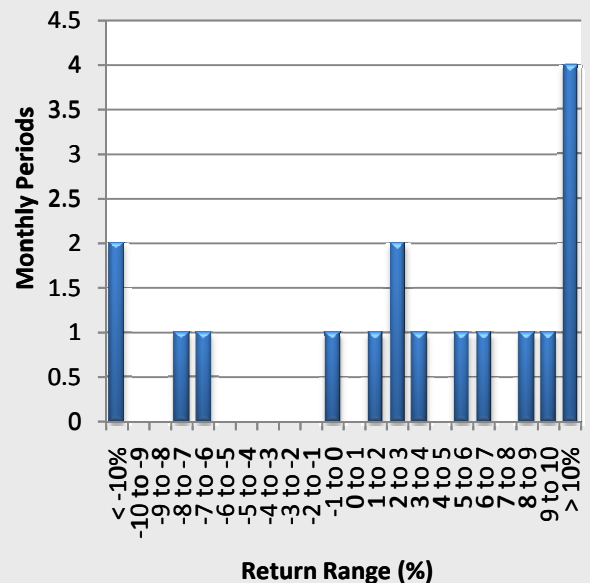
Barclays Aggregate Bond Index

The Sois Aggressive Fund seeks to maximize capital by not wearing ties at work, not trying to confuse you with a bunch of fancy technical jargon, not wasting time with a bunch of stupid meetings, and suggesting investment strategies that don't seem stupid. The fund is positioned aggressively to capture as much of the economic recovery as possible.

Growth of Initial \$1000



Distribution of Returns



Monthly Performance (%) Net of Fees													
Year	Jan	Feb	Mar	Apr	May	Jun	Jul	Aug	Sep	Oct	Nov	Dec	Year
2010	-7.35%	6.09%	8.74%	2.76%									9.83%
2009	-15.78%	-17.57%	11.51%	9.92%	14.60%	-0.24%	10.65%	5.24%	3.38%	2.06%	10.14%	1.29%	33.35%
2008												-6.72%	-6.72%

Statistical Analysis			
	Fund	BM1	BM2
Annual Returns			
2010-(YTD)	9.83%	7.05%	2.84%
2009	33.35%	26.46%	5.93%
2008	-6.72%	1.06%	3.73%
Returns			
Compound ROR	24.64%	24.77%	9.02%
Cumulative Return	36.62%	36.82%	13.01%
Cumulative VAMI	\$ 1,366	\$ 1,368	\$ 1,130
Best Month	14.60%	9.57%	3.73%
Worst Month	-17.57%	-10.65%	-1.56%
% Positive Months	70.59%	76.47%	76.47%
Risk			
Standard Deviation	32.34%	19.46%	4.02%
Sharpe (ML 3-month T-Bills)	0.12	-0.38	-0.02
Sortino Ratio (10.0%)	0.56	0.98	-0.32
Downside Deviation (10.0%)	22.79%	13.09%	2.79%
Max Drawdown	-35.24%	-18.18%	-1.56%
Months In Maximum Drawdown	3	2	1
Months To Recover	5	3	2
Comparison To Benchmark(s)			
Alpha		-0.85%	1.28%
Annualized Alpha		-9.78%	16.42%
Beta		1.56	1.38
Correlation		0.94	0.17
R-Squared		0.88	0.03

Holdings Information	
	<ul style="list-style-type: none"> ProShares Ultra Dow30 (DDM) United States Oil Fund LP (USO) Reynolds Blue Chip Growth (RBCGX)
Top 5 Holdings	
ProShares Ultra Dow30 (DDM)	59.37%
United States Oil Fund LP (USO)	19.07%
Reynolds Blue Chip Growth (RBCGX)	20.59%

Past Performance is not indicative of future results. Good thing because that means we might still pull this one off.